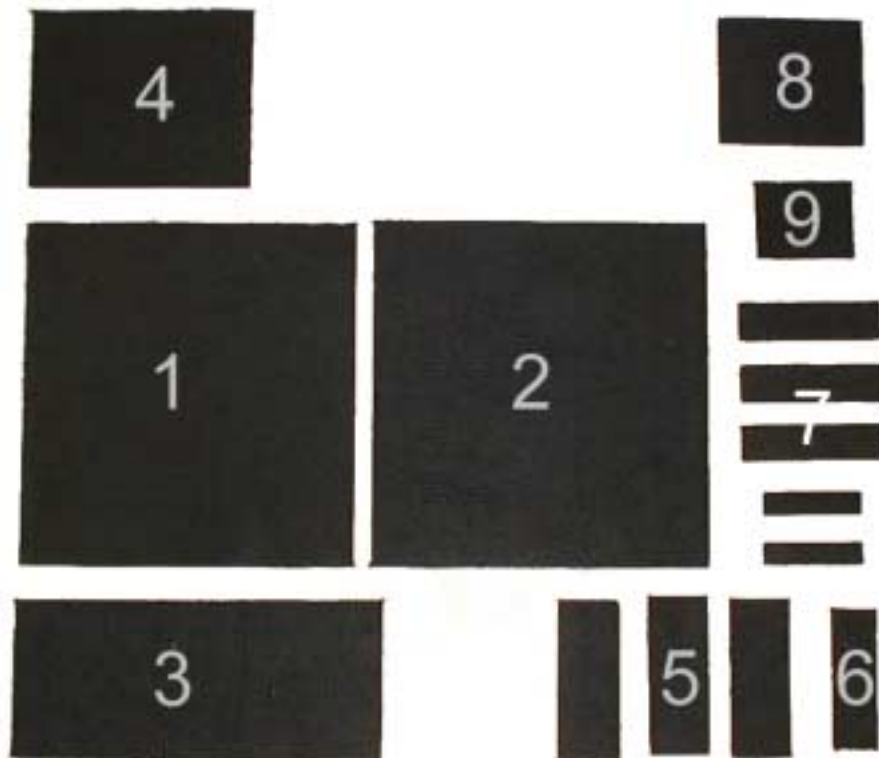


Magic Fleece Set for AOpen HQ48a-Pro



Part: 2 (8mm thick) Remove the protective layer on the backside und paste the parts into your case.

Part: 1, 2, 3, 4, 6, 7 (12mm thick) Remove the protective layer on the backside und paste the parts into your case.

Part: 8, 9 (12mm thick) Remove **NOT** the protective layer on the backside just place the part in the shown place

Part: 5 (ca. 12mm thick) Remove **NOT** the protective layer on the backside just place the part in one of the shown places using the magnetic stripes on the backside.

